

ATTACHMENT B

## **ATTACHMENT B**

**COMMUNITY CONSULTATION MATERIALS**



# City Farm - Sydney Park St Peters

## City Farm

*A place to grow and engage in farming, learning and community building in the heart of Sydney.*



### Sydney Park - the ideal location for our City Farm

With plenty of space, water resources, great public transport and an interested local community, Sydney Park is the ideal location for our City Farm.

Sydney Park has 44 hectares of lush grass, gardens, hills and wetlands, attracting rare birds and other wildlife. The park is accessible, and features children's play spaces, cycling and road safety education spaces, cafes, barbecues and recreation areas. It's also dog friendly.

The farm will be in the lesser-used, south-west corner of the park. It will provide more spaces for education and sharing knowledge, and be a great place to get to know others in your community.

### Farmers' Markets

Farmers' markets are a great source of quality produce and a great way for inner-city residents to meet

The markets at the City Farm will showcase our own farm produce and give locals an opportunity to purchase environmentally sustainable foods and connect with their community.

### Choosing the right corner of the park

The south-west corner of Sydney Park has plenty of sun, shelter, good drainage and access to the wetlands stormwater harvesting network – perfect for farm activities.

Raised planting areas will ensure produce is fresh and fit for use. We are completing further soil analysis to determine the best ways to use the land and to identify complementary food crops.

Placing the farm in this location also means we can make the most of the existing buildings and paths.

Educational activities will initially use the Alan Davidson Oval pavilion, outdoor spaces in the farm and the parkland, and a small training space in the farm's operational area. The farmers markets will use existing shade area along Sydney Park Road.

### Our City Farm Plan

The City of Sydney Council endorsed the City Farm business plan and the start of the farm's development and operations in September 2014.

The business plan will help us create a farm that promotes the role of agriculture and sustainable farming practices. The farm will be a place for food production, innovation and collaboration. It will showcase excellence in sustainable design and land management.

The plan also sets out governance frameworks and sustainable business activities. It is a complex project and it will rely on a dedicated volunteer network.

### When we'll start work

Consultation closes in April and we will report the results to Council. We'll begin detailed design works, and should start building the farm later this year.

There will be opportunities to help in the farm development – it's your farm so we want to get you involved! Farm operations are likely to start in 2016, but there will still be plenty to see and do while the farm is being built.

### Main Farm Activities

- Production and supply of fresh fruit and vegetables;
- Composting and waste management demonstration programs;
- A weekly organic farmers' market;
- Training and educational programs;
- Community volunteering opportunities; and
- Partnership development and sponsorships.

### Other Activities

- Animal husbandry programs; and
- A farm kitchen teaching organic food preparation and cooking classes.



### Site Location

extracted from Sydney Park Plan of Management

## City Farm Timelines



## Principles

The key principles for layout and function of City Farm are based on existing sustainable agricultural theories and practice.

## Sustainable Approaches



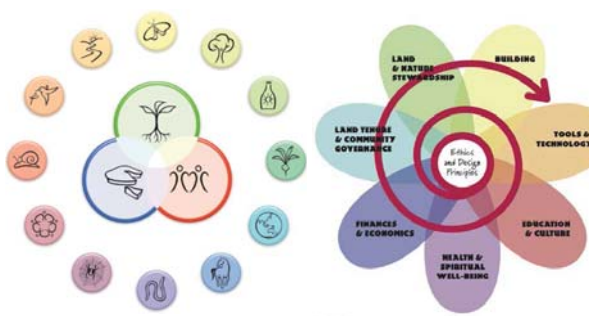
Source: WWF, Green Choice - <http://www.wwf.org.za/>

The concept design for City Farm highlights the importance of biodiversity, water soils and natural cycles in food and farming production, and accounting for aspects such as water flow on the site.

Practices on the farm will also take a sustainable approach, such as planting organic produce and managing waste on the site.

As well as producing crops, sustainable approaches are also about engaging people in learning, education and volunteering. This will provide locals with the opportunity to develop new skills and connect with others in the community. The farm will be run using a sustainable governance model, where the community will gradually take ownership of the farm in the long term.

The farm will reconnect people with how food is produced. Children and adults will learn about plants, food production and farming through farming activities. Guided by experienced staff, volunteers will sow seeds, transplant seedlings, weed, grow and harvest nutritious food without the use of synthetic chemicals. They will also learn traditional food preparation and cooking.



## Its your City Farm

Since the Sydney City Farm community group presented its vision to the City of Sydney, we have worked with you on plans for a farm in the heart of the city.

Workshops and events that helped us shape the City Farm plan include:

- Feasibility Study Community Workshops in 2010;
- Community Day at Sydney Park on 28 July 2011;
- Online forum at Sydney Your Say.com.au from 1 July – 3 September 2012;
- A Summer Garden design workshop, 13 October 2012;
- During the City Farm Summer Garden at Sydney Park, from 19 January – 24 March 2013; including Meet a Beekeeper and Sheep Dog Trials; and the City Farmer volunteer program;
- Royal Easter Show Display (March 2013)

You told us you wanted a place for:

- Food production;
- Community involvement and volunteering;
- Education and activities for children; and
- Lifelong learning and adult education.

You also asked for sustainable practice and design excellence. Your feedback has shaped the vision, themes and activities for the City Farm at Sydney Park.

That's why it's your City Farm

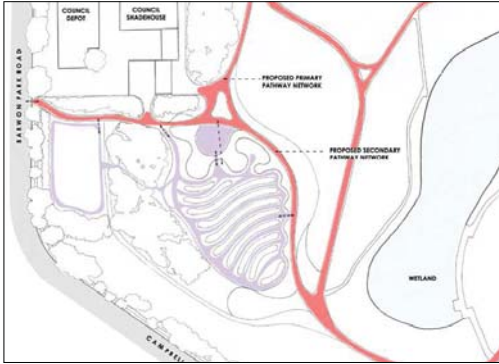
## Learning and Involvement

Learning on the farm will include all ages, from school, tertiary and vocational student programs, to volunteering and community programs.



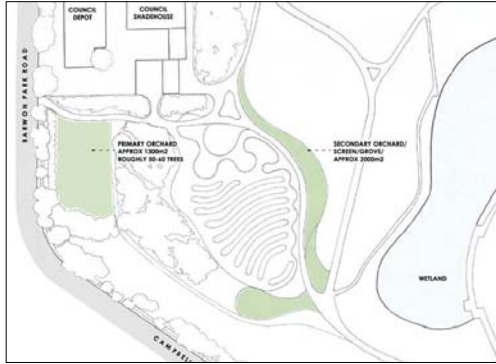


## Key Moves + Design Language



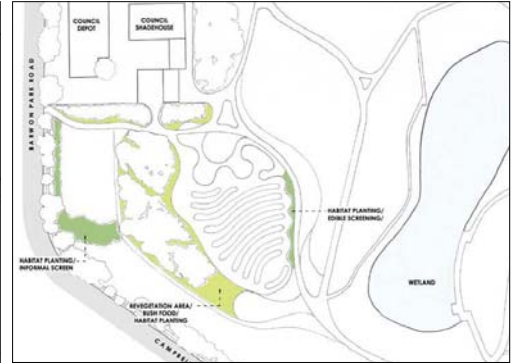
### 1. Moving around

Pathways have been designed to encourage interaction and participation among people using the farm



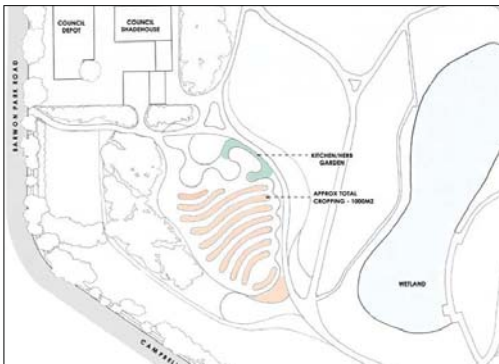
### 2. Orchard

Orchard trees are an opportunity to grow seasonal produce and contribute to sustainable food production.



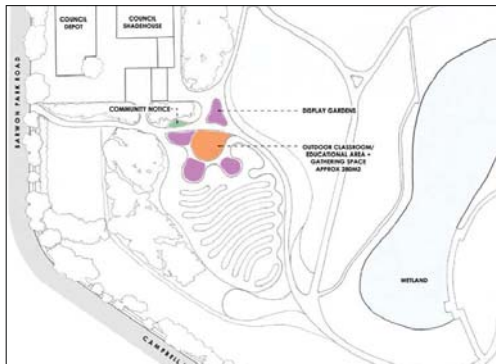
### 3. Plants and Trees

City Farm will have a variety of plants, including native species, to maintain community interest and showcase what is not normally found at home.



### 4. Growing food produce

This space to grow food like vegetables will contribute to a crop yield as part of sustainable food production



### 5. Sharing knowledge and ideas

The design has spaces for learning and is designed to enhance the practice of skills and knowledge.



### 6. Kitchen garden and compost

The kitchen garden will be used for teaching organic food preparation and cooking classes. Composting will be an important activity at the farm and a way to contribute to sustainable waste management.



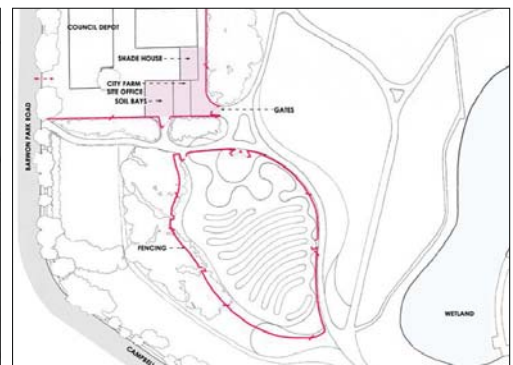
### 7. Chickens and bees

There will be opportunities to learn about farming practices from a bee farm and chickens. Bees will also play a vital role in the production of food, because they pollinate the plants so that they can produce crops.



### 8. How water will drain under the farm

The farm design is sensitive to natural water drainage patterns which will contribute to watering the plants and trees. This contributes to the farm's sustainable design



### 9. Education space, maintenance and farm fencing

There will be different places for learning and the practice of farm skills on the site, including a flexible learning space, shaped like a flower. There will be a maintenance building to store equipment needed for the farm. Fencing will provide boundaries to some areas.



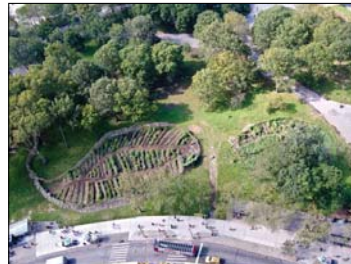


## Similar Examples



### City Farm Summer Garden

- Temporary installation to build community support for the City Farm Project
- Workshop on horticultural practices, bee keeping
- Reclaimed skip bins became temporary garden beds for crops



### Battery Park, Manhattan

- One-acre farm in Manhattan's financial district
- The farm is within a larger park
- Educational facility used by 50+ schools
- Organic design resembling local character
- Farm is on remediated land
- Farm uses 'no dig' garden beds



### Chicago City Farm, Chicago

- 1 Acre Farm Urban Chicago
- The farm is on vacant urban land
- Food-to-farm service (composting local waste)
- Site rentals and community social events



### Oranjezicht City Farm, Cape Town

- One-acre farm in Central Cape Town
- Local weekly markets sell produce
- Produce also sold to local restaurants
- Lots of community involvement and events
- Food and crafts activities and education
- Donation-based self-harvest days

## Community feedback panel

What you said	How City Farm meets these needs	Plan reference number
Growing food and food production including seasonal production, organic produce	Kitchen and herb garden	4,6
Community involvement and volunteering, sharing, participating	Community notice Design which encourages movement and social spaces - circulation	1
Education and activities for children and Lifelong learning and adult education	Outdoor class room and education area	5,9
Sustainable practices	Compost areas	3,6,8
Markets	Space for markets	
Nursery, orchard	Primary and secondary orchard	2
Animal husbandry	Fowls & Bee hives	7



## Concept Design



## Design Elements

- A - Greenhouse facilities and City Farm site office
- B - Large scale soil production
- C - New swales and water management
- D - Fowl and bug houses
- E - Organic cropping area
- F - Outdoor education/community event area
- G - Outdoor cooking facilities/kitchen garden
- H - Composting/worm farm facilities
- I - Primary orchards
- J - Secondary orchard/grove planting
- K - Revegetation/habitat planting
- L - Lawn
- M - Council depot
- N - Pathway

## Design Materials



1. No dig gardens. Geo fabric sock edging



2. Steel edging



3. Crushed Sandstone - Paved Surface



4. Recycled brick paving



5. Bee & bug accomodation



6. Fowl house + yard



7. Naturalistic fencing



8. Path hierarchy allowing discovery - Recycled



9. Worm farms & composting



10. Providing habitat to re introduce local fauna.